



# Everett Police Department Annual Report: 2012



**Steven A. Mazzie**  
**Chief of Police**

# Mission Statement

The mission of the Everett Police Department is to provide community oriented law enforcement designed to protect life and property, maintain order, while assuring fair and equal treatment for all.

## Law Enforcement Core Values

**Professionalism**- we are committed to the highest ethical standards of the law enforcement profession.

**Respect**- we pledge to preserve human dignity by caring for the citizens we serve, and for ourselves.

**Integrity**- we shall, through our behavior, reflect honesty, sincerity, and complete accountability.

**Dedication**- we are devoted to Public Service to enhance the quality of life for all.

**Excellence**- we encourage innovation, effectiveness and efficiency through training, skills and effort.

Our Motto:

***“Serving with Pride Since 1870”***

# Table of Contents

Section	Page Number(s)
Mission Statement .....	1
Table of Contents .....	2
Message from the Chief.....	3
Message from the Mayor .....	4
Organizational Chart.....	5
EPD- Overview, Office of the Chief.....	6
Administrative Services Division.....	7-8
Operations Division and DDACTS.....	9-12
Criminal Investigations Division.....	12-14
2012 EPD Highlights.....	15-19
2012 Operation Division Highlights.....	20
2012 Criminal Investigations Division Highlights.....	21-24
2012 Crime Analysis Highlights.....	25
Everett Crime Data and Analysis – 2008-2012.....	26-29
Calls for Service.....	30-31
Hot Spots.....	32
Arrest/Summons/Citation Data.....	33

## Crime Mapping Tool

For additional information on crimes as they occur in Everett, visit [Raidsonline.com](http://Raidsonline.com). The Everett Police Department and BAIR Analytics Inc. have partnered to provide a new way for the public to stay informed about crime in Everett. The data is updated four times a week. The site is free to use and can be accessed through: [http://www.raidsonline.com/?address= Everett%2CMA](http://www.raidsonline.com/?address=Everett%2CMA).



Everett citizens can download the free RAIDS Online Mobile app on the App Store<sup>SM</sup> for the iPhone®, iPad® or iPod touch®.





I am proud to present to you the 2012 Annual Report of the Everett Police Department (EPD). The Everett Police Department has been able to maintain quality police services for all who live, work, and play in our community. We have maintained our commitment to fostering positive partnerships and to work with all walks of life for the good of our community. The men and women of the Everett Police Department never cease to amaze me. Although, the everyday stories of kind gestures and good police work do not make it into the daily news, we have improved our communications by growing our involvement in social media. Overall, crime has decreased by 1% in 2012. Both Personal and Property crime categories accounted for a total of 2,196 recorded crimes. Through good crime analysis and sound crime reduction strategies, we have observed significant decreases this year in aggravated assaults, theft from motor vehicles, shoplifting, purse snatchings, and credit card/ATM fraud. While we are pleased with these results, we still have much work to do as we noted increases in vandalism, impersonation and robberies. On a positive note, assaults and robberies by firearms are declining. I am encouraged by the long-term trends, which now show a 28% reduction in overall crime over the last five years.

In 2012, the EPD had 91 sworn police Officers, 9 civilian staff and 1 sworn Animal Control Officer. We continued to bring on new police officers and are in the planning stages of adding additional staff for the new fiscal year starting July 1, 2013. This year, we literally became smarter about how we police our city. We have teamed up with Cambridge and Somerville after being the recipient of a SMART Policing grant that will enable us to use technology to truly focus on those who cross jurisdictions to commit crime. We meet monthly with the staff from the Middlesex District Attorney and the Probation Department to discuss strategy on those we consider high impact players on our streets. These are the folks who get special treatment due to their negative actions within our community. Our goal is to reduce their recidivism and/or fast tracking them to incarceration, when warranted. Lastly, we adopted a new operational model of policing called DDACTS that stands for Data Driven Approaches to Crime and Traffic Safety. This model and our results are discussed on page 11-12 of this report.

You will be glad to know that our Officers continue to be some of the best equipped and trained in the Commonwealth. This year we transitioned to a new sidearm for our officers, the Glock .45 caliber. It turned out to be a smooth transition due to the hard work of our Firearms Training team. In addition, over 65 of our officers were outfitted with new ballistic body armor for their personal protection. We added new Ford patrol vehicles to the fleet and are constantly trying to find ways to be more effective and efficient.

In closing, although we face many challenges, I am very optimistic that we can continue to reduce crime over the long-term. With additional personnel, and effective strategies that allow us to be in the right places at the right times, our future of working together can produce results that we can all take pride in. It is imperative for all members of the community to be involved. Attend a community meeting, watch a crime prevention show, look out for your neighbors or just stay connected. Call 911 when you see something that is not right. As always, I want to thank all members of the EPD, both civilian and sworn personnel, for their continued dedication, service and commitment to the people of Everett. We will continue to be transparent, accountable, and provide quality leadership within the community.

Sincerely,

A handwritten signature in black ink that reads "Steven A. Mazzo".

Steven A. Mazzo  
Chief of Police

## A MESSAGE FROM THE MAYOR

Dear Residents,

I am very proud of the men and women that make up our Everett Police Department. Keeping our City safe is an enormous undertaking. I'm proud that each member of the department is a model of professionalism, dedication, and excellence.



Over the past year, our Police Department has implemented and utilized several crime deterring initiatives to ensure the safety and well-being of our community.

With programs such as GPS monitoring, Smart Policing Grants, and the Shannon Anti-gang Grant, our police force is partnering with the District Attorney's Office, the Massachusetts Probation Department, and surrounding communities to develop comprehensive, multi-agency, multi-jurisdictional approaches to addressing crimes and identifying repeat offenders and high-risk individuals that enter our community.

The efforts of our Police Department have not gone unnoticed. Last year, the EPD was recognized nationally by the Vera Institute of Justice for its effective work with immigrant communities.

Our city is fortunate to have a department that strives to do more within our community. This commitment to effective, consistent law enforcement, and engagement has earned the trust and respect of our residents.

I look forward to another safe, healthy, and productive year.

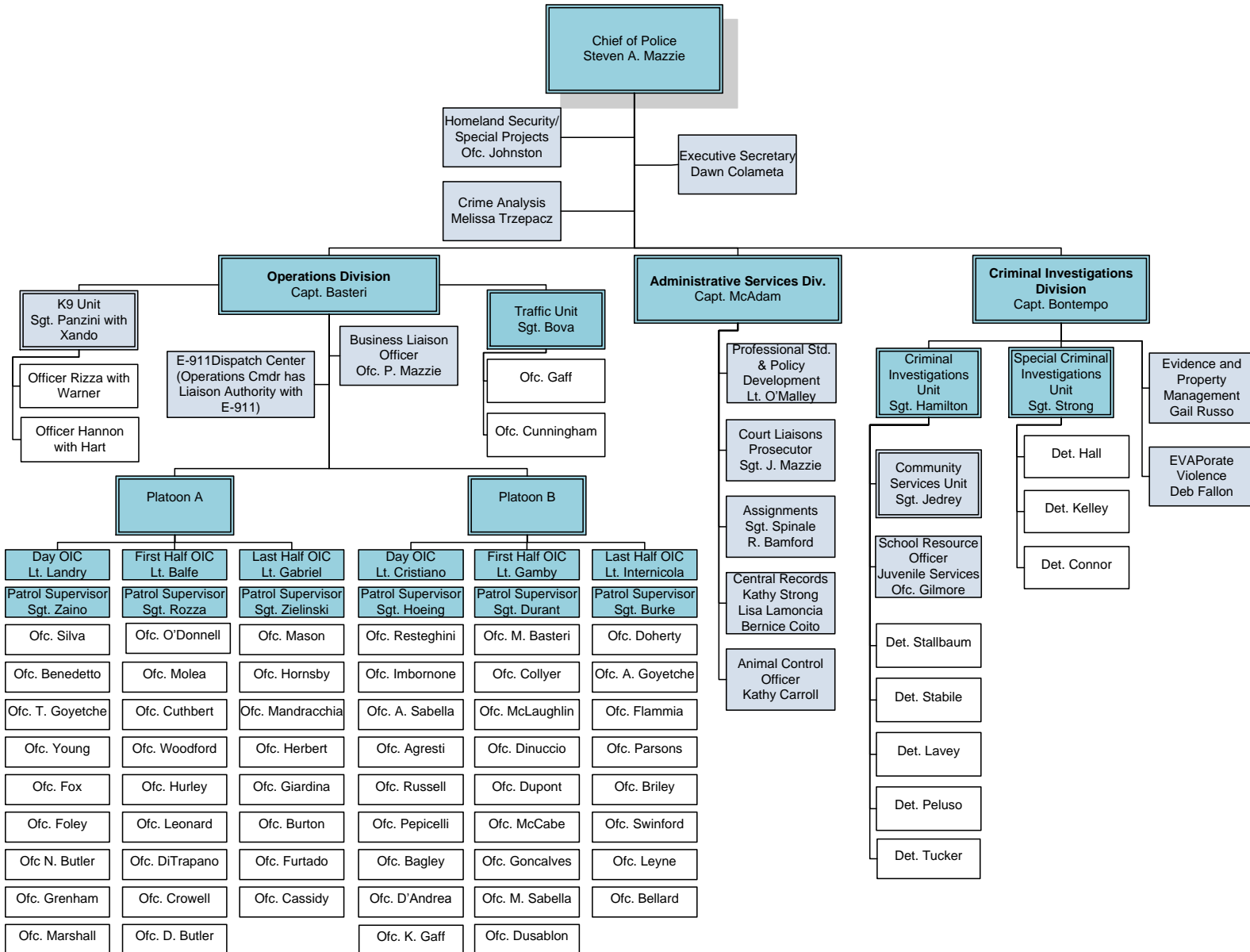
Sincerely,

A handwritten signature in black ink that reads "Carlo DeMaria, Jr." The signature is written in a cursive, flowing style.

Carlo DeMaria, Jr.

# Organizational Chart

In 2012, the Everett Police Department finished the year with 91 sworn Police Officers, 1 sworn Animal Control Officer and 9 civilian employees.



In 2012 two of Everett's finest retired. Officer Joyner and Officer Gibbons served Everett for a combined 61 years.

## EVERETT POLICE DEPARTMENT - Overview

### Office of the Chief

The Office of the Chief is staffed with the Chief, one patrolman and 3 civilians. The civilians include an Executive Secretary, a part-time Payroll Clerk and a full-time Crime Analyst. The patrolman assists with administrative functions of the office, manages the department's Sharepoint site and department radio system, coordinates with other agencies on Homeland Security matters and is responsible for special projects. He is also the Marine Unit officer and operates the department's Police Boat.

The management of the department is done through the Office of the Chief. Decisions regarding personnel, budgeting, purchasing, strategy and coordination are all part of this operation.

### Crime Analysis

Crime analysis involves the systematic process of identifying and analyzing patterns and trends in crime. The information collected on trends and patterns can help law enforcement agencies deploy resources in a more effective manner, and assist detectives in identifying and apprehending suspects. Another goal of crime analysis is to create solutions to crime problems and develop crime prevention strategies. Crime analysts study crime reports, arrest reports, information from other agencies, and police calls for service to identify emerging patterns, series, and trends in a timely manner.

The Everett Police Department currently employs one full-time analyst and one part-time intern. Our **Crime Analysis Unit** issues bulletins, reports, and alerts to the Everett Police Department and other agencies statewide. In addition, our analysts also: prepare statistics, complete data queries, create maps on request, prepare information for community meetings, answer questions from the public and the press, and participate in regional information sharing meetings.

### Everett Police Dept Connected to Social Media

The Everett Police Department invites you to find us/contact us via these social media sites. On these sites, you can see weekly updates for "Everett's Most Wanted," get up-to-date information on cases, submit tips and suggestions and view incident-related videos.

Like us on **Facebook**: <http://www.facebook.com/EverettPoliceMa>

Follow us on **Twitter**: @everettpolicema or <https://twitter.com/#!/everettpolicema>

## Administrative Services Division

### Captain Patrick McAdam

The **Administrative Services Division** of the Everett Police Department includes the Professional Standards and Policy Development Unit, Public Information Office, Court Liaison Officer, Central Records Bureau, and the Animal Control Officer.

The **Professional Standards and Policy Development Unit** is responsible for the professional development, training, policy development and review, internal investigations and audits of departmental personnel and programs

The sworn members of the department completed over 7,500 hours of in-service and professional development training in 2012. All department members complete annual in-service training in First Aid, CPR/AED, Legal Issues, Use of Force, Annual Weapons Qualification and topics selected by the Municipal Police Training Council (MPTC) as areas of special emphasis. Those special emphasis areas included Sexual Assault involving Older Adults and Persons with Disabilities, Handling Emotionally Disturbed Persons, Reducing Excessive Force, Reducing Police Vehicle Collisions and Officer Involved Domestic Violence. Selected personnel also completed other professional development course that focused on community relations, leadership development, HAZMAT, underwater search and recovery, interview and interrogation, fingerprinting, and terrorism response.

The department's policy manual is continually updated to ensure that it is up-to-date with the most current state and federal laws, as well as being in compliance with all applicable court rulings and Law Enforcement best practices.

Seven interns from various colleges in Massachusetts completed course requirements through the Everett Police Department (about 700 hours combined). During their internships, the students learned about the various arms of the police department, shadowed detectives, patrolmen, the crime analyst, and other members of the department. The interns also went to the range and on ride-a-longs.

The **Public Information Office (PIO)** is the central location for all press contacts, media requests and point of contact for members of the community seeking information from or about the department. The PIO routinely updates the media and the community on department activities to include "breaking news" stories as they occur. The PIO is responsible for the site content on the department's web site: <http://everettpolicema.com> and its social media content.

The **Court Liaison Officer (CLO)** for the department interacts on a daily basis with the District Attorney and the court's various departments, such as the clerk and probation. The CLO reviews all reports submitted by the department's officers ranging from arrest or warrants to criminal complaints. Additionally, the CLO is responsible for the scheduling and appearance of officers in the commonwealth's various courts.



## Administrative Services Division Continued

The **Detail/Assignments Officer** is responsible for assigning officers to work with public and private contractors on various projects throughout the city. Additionally, the officer/clerk is responsible for proper billing and accounts receivable and for helping to plan the staffing needs at large scale events.

The **Central Records Bureau** is where all police-related records are maintained and stored. Clerks in the records bureau respond to numerous requests for documents such as accident reports, police reports, daily arrest, and incident logs. Additionally, all traffic citations are entered into our records management system through personnel assigned to this bureau.

The **Animal Control Officer (ACO)** is in charge of all facets related to domesticated and wild animals throughout the city. The ACO helps identify lost or injured animals and enforces city ordinances related to animal issues. In 2012, the ACO issued seven tickets.



*Everett Police host a  
Crime Prevention group  
that meets the third  
Tuesday of every monthly  
at 7 PM at police  
headquarters. All are  
welcome.*



## Operations Division

### Captain Richard Basteri

The Everett Police Department's **Operations Division** consists of one captain, six lieutenants, eight sergeants, and approximately fifty-two patrol officers. Patrol shifts rotate and consist of four-10 hour shifts: a day shift, evening shift and an overnight shift. Each shift is comprised of a lieutenant, one sergeant and a squad of 8 to 9 officers. The lieutenant commands each shift, and the squad are led on the street by the sergeant. All of our shifts overlap by forty five minutes between the day shift and the evening shift, with a five hour overlap between 9 pm and 2 am. The evening shift is generally our busiest shift and our manpower levels are doubled to address the increase in calls for service.

The Operations Division is the largest division in the Everett Police Department. It operates year round, seven days a week, twenty-four hours a day. It includes patrol units, traffic units and K-9 units. The function of the patrol units is to provide uniform patrol coverage to all areas of the city. Officers conduct patrols on foot, bicycle and in motor vehicles. They respond to both past crimes and those in progress, motor vehicle crashes, directed patrols, injuries, illnesses and fires. They routinely arrest offenders, investigate citizen complaints, provide traffic control and enforcement, appear in court, and attend community based meetings. Officers perform directed patrols for specific issues brought forward by the community or through crime analysis and mapping by the department's crime analyst. Officers are encouraged to interact with the business community during slower periods, direct extra attention towards areas of concern to the community, and complete their incident reports.

The primary goal of the Operations Division is the prevention of crime and disorder by adhering to community policing principles, which have been adopted by the Everett Police Department. Under this philosophy, officers are assigned to designated areas of the city called sectors and each officer has a responsibility to address the concerns in the area with the assistance of specialized units, other city departments, and community members.

Traffic and K-9 units assist patrol units in calls for service but are also engaged in other duties. Traffic personnel conduct selective traffic enforcement in neighborhoods, truck enforcement for inspection and overweight vehicles, provide escorts for a variety of events, investigate hit and run crashes, coordinate field sobriety checkpoints, coordinate crossing guard assignments, and perform educational outreach within the community. The K9 unit consists of three handlers and an assigned dog trained in a variety of functions. The Everett Police Department has three K9 teams, one is used for patrolling, tracking (lost persons or fleeing felons) and drug detection, and the other two are trained for explosives and firearms evidence recovery. Our K-9 units operate mutually with surrounding cities and towns to enhance our ability to have 24 hour coverage during their off hours.

In 2012, in addition to their regular duties, the K-9 bomb dogs responded to over 40 calls for service specifically for the recovery of gun and shell casings. They also conduct K-9 demonstrations at events (National Night Out), conduct bomb sweeps at schools and other high profile locations including the July 4<sup>th</sup> festivities on the Esplanade. The Patrol/Drug K-9 Officer responded to over 65 calls for narcotic and patrol searches in addition to his regular duties. The K-9 teams have worked with over a dozen cities and agencies during 2012 and are directly or indirectly responsible for the arrest of 51 suspects, the seizure of 30 M\V's including 16 with drug hides, and the seizure of a vast amount of heroin, cocaine, and marijuana.

## Operations Division Continued Captain Richard Basteri

The Operations Division dedicates an officer to work with the business community. This officer is responsible for patrolling the Gateway Mall, as well as Everett and Glendale Square areas. In 2012, the Everett Police Department received over 570 calls for service from the Gateway Mall for larcenies, B&E of M/V's, etc. The officer provides a visible deterrent to crime and offers strategies to the businesses to reduce the likelihood of victimization in these areas. This officer is also a liaison to the business community and attends community meetings, as well as assisting with community and neighborhood problems.

Lastly, the Operations Division offers two specialized units to support the operations, the Special Operations Unit (SOU), which is a trained and equipped tactical team to deal with high risk warrant service and barricaded subjects, and the Underwater Search and Recovery Unit (USRU), which is a team of trained and equipped divers to respond to underwater emergencies and other missions on our waterfront.

This Division responds to Emergency 911 calls, other calls for service, and conducts essential activities such as directed patrols. In 2012, this division was involved in 29,085 calls/activities (including 911 calls, directed patrols, traffic issues etcetera). This is an increase of over 5000 calls/activities from 2011. Of the calls received in 2012, approximately 5,154 were documented as incidents requiring reports (Approximately 1,000 more than 2011). During this period, the department arrested 790 adults, 26 juveniles and responded to 1,235 motor vehicle accidents.<sup>1</sup>



<sup>1</sup> Microsystems, CrimeTrack. Retrieved Feb 2, 2013 from the PROIV database. **\*\*CrimeTrack is EPD's Records Management System.\*\***

## Operations Division—DDACTS Initiative

### Captain Richard Basteri

In July 2012, the Operations Division implemented a new initiative called Data Driven Approaches to Crime and Safety (DDACTS). DDACTS is a law enforcement operational model which integrates location-based crime and traffic data to establish effective and efficient methods for deploying law enforcement and other resources. Using geo-mapping to identify areas that have high incidences of crime and crashes, DDACTS uses traffic enforcement strategies that play a dual role in fighting crime and reducing crashes and traffic violations. Drawing on the deterrent of highly visible traffic enforcement and the knowledge that crime often involves the use of motor vehicles, the goal of DDACTS is to reduce the incidence of crime, crashes, and traffic violations. DDACTS is supported by Regional and National partners such as the NIJ, FHA, and MACA (MA Association of Crime Analysts).

A three year review of the crime and MV data for the city of Everett was conducted and a .5 mile stretch along Broadway was selected for implementation. This area was selected because it represented (over the past three years) 47 of the 240 or 19.6% of the reported robberies in the City; 288 or 15% of accidents; over 900 or 15% of the motor vehicle citations were written in this area.

### Highlights of the Six- month Review of DDACTS

During the first six month timeframe, 1150 different patrols were sent with coverage equaling 470+ hours. In addition to the data below, 662 motor vehicle operators were given a verbal warning, 37 complaints were filed, 113 parking tickets were issued, 36 MVs were towed, 427 “walk and talks” with the public were done, and 14 Field Interviews were conducted. About 3 months into DDACTS, the EPD reinstated and revamped its Field Interview policy and data collection methods. In addition, 21 arrests were made (unlicensed operation, warrants, OUI, suspended license and drug possession). When compared to the same time period the prior year, the DDACTS patrols resulted in a 169% increase in citations and a 110% increase in arrests in the treatment area. Furthermore, during this 6 month period the treatment area saw a 28% decrease in MV accidents, a 32% decrease in Part A crimes and no increase in robberies. The three recorded robberies that occurred in the first 3 months of the operation were all unarmed robberies. None of these robberies occurred while there was an active DDACTS patrol. Three additional years of data have been provided for context and trend analysis.

### City Wide 7/25-1/25

6 MONTH BY YEAR	2009-2010	2010-2011	2011-2012	2012-2013	DIFF Between 2011-12 & 2012-13	CHANGE Between 2011-12 & 2012-13
CITATIONS (176)	2009	1446	1159	2107	948	82%
ACCIDENTS	596	720	595	599	4	1%
ARRESTS	339	315	327	298	-29	-9%
ROBBERY	33	36	24	23	-1	-4%
PART A CRIMES*	1254	1267	1311	1154	-157	-12%

**\*Note: Part A crimes include:** Arson; Assault Offenses - Aggravated Assault, Simple Assault, Intimidation; Bribery; Burglary/Breaking and Entering; Counterfeiting/Forgery; Destruction/Damage/Vandalism of Property; Drug/Narcotic Offenses - Drug/Narcotic Violations, Drug Equipment Violations; Embezzlement; Extortion/Blackmail; Fraud Offenses - False Pretenses/Swindle/Confidence Game, Credit Card/Automatic Teller Machine Fraud, Impersonation, Welfare Fraud, Wire Fraud; Gambling Offenses - Betting/Wagering, Operating/Promoting/Assisting Gambling, Gambling Equipment Violations, Sports Tampering; Homicide Offenses - Murder and Non-negligent Manslaughter, Negligent Manslaughter, Justifiable Homicide; Kidnapping/Abduction



## DDACTS treatment area 7/25-1/25

6 MONTH BY YEAR	Pre-DDACTS			DDACTS	DIFF between 2011-12 & 2012-13	CHANGE between 2011-12 & 2012-13
	2009- 2010	2010- 2011	2011- 2012	2012- 2013		
CITATIONS (176)	58	28	45	121	76	169%
ACCIDENTS	25	23	29	21	-8	-28%
ARRESTS	9	7	10	21	11	110%
ROBBERY	4	5	3	3	0	0%
PART A CRIMES	24	23	28	19	-9	-32%

## Criminal Investigations Division Captain Robert Bontempo

The Everett Police Department's Criminal Investigations Division (CID) is staffed by a captain, three sergeants and nine detectives. The Division is comprised of three units: the Criminal Investigations Unit (CIU), the Special Criminal Investigations Unit (SCIU), and the Youth Services/Gang Unit (YSU). CID officers receive specialized training in the investigation of crimes such as arson, narcotics offenses, firearms offenses, and adult and child sexual assaults; the preparation and execution of search warrants, fingerprinting, interviewing techniques, and other relevant areas of professional development.

The investigators manage a varied caseload including burglaries, sexual assaults, homicides, arson, narcotics offenses, financial crimes, bank robberies, domestic violence, youth offenses, larcenies, property crimes, assaults, identity theft and threats. Investigators work collaboratively with other law enforcement agencies at the city, state and federal levels, proactively sharing resources and intelligence information. CID officers also participate in various task forces targeting the detection and prevention of specific types of crimes such as narcotics distribution, bank robberies, and gang violence.

## Criminal Investigations Unit (CIU)

The CIU, traditionally known as the Detective Division, investigates many of the above-mentioned crimes occurring in the City of Everett. Cases may be referred to the unit from other law enforcement agencies, referred for follow up from the Patrol Division, or received as a direct call for assistance. The Unit also works closely with the Middlesex District Attorney on homicides, domestic violence, and sexual assault investigations while assisting as needed on other pending matters.

During 2012, approximately 477 cases were referred to the CIU. Each detective carried an average caseload of 96 cases.



## Criminal Investigations Division Continued Captain Robert Bontempo

### Special Criminal Investigations Unit (SCIU)

The SCIU mission is to suppress overt and covert drug dealing, prostitution, and other types of crimes of a sensitive nature. The SCIU accomplishes their mission by targeting street-level and mid-level drug dealing through the use of undercover officers, confidential informants, and decoys. The unit is additionally involved with task forces at the federal level, which are comprised of officers from other local and state agencies. Additionally, detectives of the unit assist other agencies in their efforts to address cross-border drug distribution in neighboring communities. Currently, there are three detectives and one sergeant assigned to the unit. One detective is assigned full time to the DEA task force. The SCIU was involved with 72 arrests, (4 in Chelsea) and executed 12 search warrants. 205 Felony charges were brought against these individuals. Additionally, the following types and quantities of drugs and property were seized:

Property Type	Amount
Heroin	3 kilos
Cocaine	450 grams
Marijuana	1 grow house
Firearms	2 – 1 loaded 380, 1 Assault rifle with 300 rounds
Cars Seized	21
Money Seized	\$44,000+

### Youth Services/Gang Unit (YSU)

The **Youth Services Unit (YSU)** consists of one sergeant and one patrolman who have dual roles. The patrolman is assigned as the School Resource Officer (SRO) in the High School, in partnership with the Everett Public Schools to increase safety in the schools and to develop an open ongoing dialogue between the youths and the police department. The officer assigned as SRO has been trained and certified in special classification and on occasion will help out with issues in the city's remaining middle schools. The SRO attends a juvenile justice meeting with school officials, juvenile probation, mental health professionals, the Middlesex District Attorney's Office, and assists school administrators with grades K to 8.

The sergeant assigned to this unit manages the unit, addresses juvenile crime issues throughout the city, writes and manages grants, and attends community outreach meetings. He is also part of a regional gang task force, known as the "Metro-Gang Task Force," with nine other communities and several Federal agencies. This is funded under the Charles E. Shannon community safety grant.

Both the sergeant and patrolman of YSU split their time with the gang unit and are responsible for patrolling hot spot areas of the city including parks and playgrounds. These officers also identify and disrupt gang activity and youth related incidents, conduct follow up investigations, work with the Metro Gang Task Force, attend community meetings, and assist with community and neighbor problems.

## Criminal Investigations Division Continued Captain Robert Bontempo

### EVAPorate Violence Project

The EVAPorate Violence Project (EVAP) is part of the CID. In 2012, EVAP served a total of 550 people. Of this number, there were 293 209A Abuse Prevention Orders (83 orders, including those with Permanent status, were carried-over from 2011). 360 of the victims were women (76 of whom were under the age of 18 and 8 of whom were over the age of 65, with 91 of females who did not report their ages). 116 of the victims were male (63 of whom were under the age of 18 and 1 of whom was over the age of 65, with 9 males who did not report their ages). In addition, 125 active APOs were carried-over to 2013.

As EVAP provides services in support of law enforcement cases, including court advocacy, crisis intervention, safety planning, referral and other. EVAP also provided services to victims and their families who did not have Abuse Prevention Orders in effect, but who were affected by domestic violence incidents responded to by the Everett Police and who were referred by Everett City Government, Everett Mayor's Office of Human Services, Everett Public Schools, local businesses, community and religious organizations, and/or by other victims previously served by EVAP. EVAP provided direct care support to a total of 240 people whose lives have been affected by domestic violence. 190 of the victims were women (40 of whom were under the age of 18), and 50 victims were male (22 of whom were under the age of 18). Of these cases, 29 cases were carried-over to 2013 and remain active, and 33 cases in 2012 were referred to our partner program, Portal To Hope ("PTH") for comprehensive care, including emergency shelter, legal aid, relocation/transportation, and benevolence services.

## 2012 Everett Police Department Highlights

- In late 2011 and early 2012, the Everett Police Department swore in four new Police Officers. These Officers all joined the Operations Division and have helped make an immediate impact.



Officer Patrick Cassidy (pictured left) was sworn in on December 27, 2011

- In June the department worked with community members to ensure a safe and secure environment at one of the city's first carnivals in a long time. This ten day carnival was located at Glendale Park and was planned as a fundraising campaign for the Everett Pop Warner football team.
- In 2012, the Everett Department along with the Somerville and Cambridge departments was awarded a competitive Smart Policing Initiative grant from the U.S. Department of Justice. This grant will enable the Cambridge, Everett, and Somerville police departments and their research partner, Justice & Security Strategies, Inc., to engage in an innovative approach utilizing predictive policing analytics to prevent cross-jurisdictional violent crime.
- During November 2012, the Everett Police Department participated in a 24-hour Urban Shield Exercise with eight UASI communities (Urban Area Security Initiative) and other state and federal agencies. The purpose of this exercise was to assess the region's ability to successfully respond to and manage multiple terrorist events and other emergencies occurring simultaneously throughout the Boston area. The City of Everett participated in two components, SWAT and Maritime. The Urban Shield Exercise provided specific training opportunities to law enforcement entities, as well as tested the region's ability to integrate multi-discipline entities, including EMS (Emergency Medical Services), Fire Services, EOD (Explosive Ordnance Disposal), Tactical Teams and Underwater Recovery Teams in a consolidated event. The Boston Homeland Security Region was provided with critical gap analysis information from this exercise; it identified the existing level of preparedness and capabilities while comparing this information to related desired levels.



## 2012 Everett Police Department Highlights (cont.)

- ✦ As announced in 2011, the Everett Police was selected for the U.S. Department of Justice funded “Engaging Police in Immigrant Communities” (EPIC) Project. The EPIC project works to overcome barriers that exist between law enforcement and the neighbors they serve. The project provides law enforcement agencies with useful information—drawn from other jurisdictions about promising practices for strengthening their relationships with immigrant communities. In 2012, the Everett Police Department worked with the Joint Committee for Children’s Health Care in Everett (JCCHE)—a consortium of children’s advocates, researchers, and social service providers to create a brochure entitled “What to expect when stopped by the Police.” Hardcopies of this brochure are available throughout the city and an electronic version can be viewed here: <http://www.vera.org/files/brochureenglish.pdf>. This brochure was translated by community volunteers into Arabic, Haitian Creole, Italian, Portuguese, and Spanish. The brochure’s content is based on questions that Chief Mазzie received during a series of forums organized by the JCCHE with local organizations serving the city’s immigrant communities. A report of the nationwide work completed under this project can be found here: [http://www.ncdsv.org/images/Vera-COPS\\_EngagingPoliceInImmigrantCommunities\\_10-2012.pdf](http://www.ncdsv.org/images/Vera-COPS_EngagingPoliceInImmigrantCommunities_10-2012.pdf)
- ✦ In 2012, the Everett Police Department continued to meet and conduct outreach with the immigrant community holding quarterly meetings at the Connelly Center in Everett. These meetings have fostered positive relationships and an exchange of important information between the Police and community members.
- ✦ The Everett Police Department partnered with Eliot Community Human Services (formerly Tri-City) and the Whidden Hospital Psychiatric Unit Director, Dr. Marshall Reiner, in kicking off a Mental Health Jail Diversion Program that was implemented in 2012. In 2012, all department personnel completed a block of 8-hour training entitled “Introduction to Mental Health Issues and Mental Health Services in Everett”.
- ✦ In 2012, the Everett Police Department sent personnel to participate in a “Collaborative Think Tank for Advancing Police Knowledge and Practice and the Developing the Strategic Problem-solving Skills of Police Practitioners.” The goal of this think tank was to bring together multiple personnel from several departments in an effort to pool intellects, experiences and expertise to create new and effective solutions to major issues facing their departments and the communities they serve.
- ✦ The Everett Police Department hosted its first Open House. Approximately 50 business owners and elected officials attended. The attendees were able to greet the Chief and other personnel, view a presentation on the department (including: history, goals, initiatives), and witness a demonstration by the K9 Unit.

## 2012 Everett Police Department Highlights (cont.)

- In 2012, the Everett Police Department kicked off the **Lieutenant Liaison Program**. The Everett Police Department's Lieutenant Liaison Program is designed to give the residents of the City of Everett a personal contact person within the department. Each ward of the city will have a police lieutenant as a point of contact to address the quality of life issues that may trouble them. A list of lieutenants with contact information for each ward are listed on the departments website here: <http://everettpolicema.com/Liason%20Program.htm>
- National Night Out**- Everett's 10<sup>th</sup> Annual National Night Out occurred on August 7, 2012. Everett's National Night Out is a collaboration with the National Association of Town Watch, a non-profit crime prevention organization that works in cooperation with thousands of crime watch groups and law enforcement agencies throughout the country. Designed to strengthen our neighborhoods through police-community partnerships, National Night Out heightens crime and drug prevention, builds support and participation in local anti-crime programs, and sends a message to criminals that our neighborhoods are organized and fighting back. Over 300 people gathered in the recreation center parking lot for an event that included a free barbeque, slush, popcorn, games, prizes and demonstrations of martial arts and dancing. In 2012, a Calypso band was added to the lineup.

### National Night Out



### Technological Upgrades and Changes

- In 2012 the department was able to upgrade the city's 16 cameras from City-Watch to DVTEL technology. The cameras have better resolution, longer retention periods, and easier user access as a result of the upgrade.
- The department's and 911's radios were all reprogrammed and set to narrowband. This change was a direct result of an order released by the U.S. Federal Communications Commission (FCC) that states that as of January 1, 2013, all public safety and business industrial land mobile radio systems operating in the 150-512 MHz radio bands must cease operating using 25 kHz efficiency technology, and begin operating using at least 12.5 kHz efficiency technology. Migration to 12.5 kHz efficiency technology (referred to as Narrowbanding) will allow the creation of additional channel capacity within the same radio spectrum, and support more users.
- Both the Fire and Police Departments had system upgrades to their existing Firewalls. These upgrades will ensure that both departments' data is secure.



## 2012 Everett Police Department Highlights (cont.)

### ✚ Charitable Events

1. Everett officers grew goatees and raised \$5000 for the Crohns and Colitis Foundation, the Massachusetts Special Olympics, and Cops for Kids with Cancer in February 2012.



2. Everett Police Department collected dozens of donated winter hats and mittens for Everett school children in December 2012.



3. Everett Police Department hosted a 5K road race to benefit 7 year-old Jared Connor in his fight against Sanfilippo Syndrome on September 16, 2012.



### Prescription Drug Drop-box Locations



The Everett Police Department is open 24-hours a day for residents to drop off unused or expired prescription drugs. Residents are encouraged to come to the Everett Police Department to properly dispose of their prescriptions by placing them in the prescription drop-box located in the lobby. This program involves no paperwork and there are no questions asked.



During 2012, residents of the city continued to deposit their unwanted or expired medications inside the 24 hour drop-off box. Every 30 days, the contents of the box are removed and stored inside a restricted vault until they are transported to an approved incinerator for destruction.

In May of 2012, Middlesex County District Attorney Gerry Leone purchased 29 MedReturn Drug Collection Units. The City of Everett received one more unit, and it was placed inside the Board of Health Office in City Hall. Residents may drop off their unwanted medications during regular business hours.

- On Saturday April 28<sup>th</sup>, 2012, Everett participated in the National Drug Enforcement Drug Take Back event. During this event across the US, a record 552,161 pounds of *unwanted or expired medications were turned in for safe and proper disposal at the 5,659 take-back sites that were available in all 50 states and U.S. territories. Over the past four Take Back Days, the DEA and its state, local, and tribal law-enforcement and community partners have removed over 1.5 million pounds (774 tons) of medication from circulation.*

***The next National Take Back Initiative collection will be April 27<sup>th</sup>, 2013, and all residents are encouraged to dispose of their unwanted and unused medicines at the Everett Police Station lobby.***

- In 2012, the Everett Police Department subscribed to MyPD™, a public tip line to police developed by Wired Blue. To date, the app has been loaded over 230 times and 60+ people have subscribed to the new Push feature. The department has received around 25 anonymous tips from this app. The app provides officers and members of our community with many valuable features that put our agency's resources at the community's fingertips for 24/7 mobile access. The MyPD™ Phone App is available for both the iPhone and Android. With the App, you can ask officers questions, commend an officer, find contact information, submit anonymous tips, get news and alerts, and more.



## 2012 Everett Police Department Highlights (cont.)

### Operations Division

The men and women of the Operations Division are the backbone of the department. They are the most visible police department representatives on the streets and are the officers that our public has the most contact with. They perform a wide range of duties in a competent and efficient manner.

The patrol officers of the Operations Division again excelled in the performance of their duties in 2012. Capturing bank robbers, saving lives, and making a positive difference in the lives of the residents of this community...

- ✚ On January 1, 2012, an EPD officer went to the Everett Credit union at 650 Broadway. While using the ATM outside, two tellers caught his attention and told him that the bank had just been robbed by a male about 5'8" with a white and beige jacket. The Suspect reportedly fled in a white Metro van. The white Metro van was spotted and stopped. The suspect jumped out and fled but was apprehended after a short foot pursuit. The suspect was identified and found to be a 28 year old male from Everett. A knife, along with the stolen money, was recovered.

On May 30, 2012, a robbery occurred at Eagle Bank Located at 229 Ferry St. Officers arrived on scene and were shown the suspects' direction of flight. After a long foot pursuit (involving, fences (see below), roof tops and backyards) the suspect was caught and apprehended. The stolen money was located in driveways and yards and the note used during the robbery was located on a roof top on Timothy Ave.



If you can't go over it, go through it---- EPD pursuit officer went through the fence after determining it was not structurally sound to go over it!!



## 2012 Everett Police Department Highlights (cont.)

### Criminal Investigations Unit (CIU)

Of the hundreds of cases investigated by this unit, many were solved through persistent determination and sound and basic detective skills. It should also be noted that this unit, with the assistance of the FBI Bank Robbery Task Force, had a clearance rate of 80-90% for bank robberies occurring in Everett through 2012.

#### The following case highlights these skills:

- ✚ On January 3<sup>rd</sup> a young Everett woman was murdered on Pearl Street. On the 6<sup>th</sup> of January, a male from Chelsea, who was known to the victim, was arrested on a charge of murder by the CIU.
- ✚ On October 15<sup>th</sup>, a young male was stabbed to death (after an altercation) on Hosmer Street. On November 5<sup>th</sup>, a 21-year-old male from Everett, who was known to the victim, was arrested on a charge of murder by the CIU.
- ✚ Detectives from the CID conducted a six month investigation into allegations of identity theft. The investigation to date has uncovered 70 victims living in various states/countries and resulted in the arrest of the alleged perpetrator. The identify theft ring was based out of Chelsea Street and charges were filled against a 50-year-old woman from Everett.
- ✚ In 2012, Detectives from CIU started a long-term investigation into illegal gambling operations in Everett. In 2012, 15 illegal gambling machines were seized by the CIU. The outcome of these cases is reflected in the NIBRS reportable crimes found on pages 26-27 under “gambling equipment violations and Promoting gambling.”



## 2012 Everett Police Department Highlights (cont.)

### Special Criminal Investigations Unit (SCIU)

- ✚ A Detective from SCIU received information from a reliable source that it knew of an individual that was attempting to sell a SKS Assault Rifle. An undercover Officer from SCIU made contact with this individual, gained their trust and arranged to purchase the gun in Everett. The undercover met the three males and verified that the gun was real. The undercover Officer was able to communicate to surveillance that the loaded rifle was authentic, giving units time to assemble. All three males were arrested without incident. An SKS assault rifle was recovered along with 300 rounds of ammunition.
- ✚ A DEA taskforce officer from Everett received information that there were three individuals selling large amounts of heroin in Everett. The Officer was able to ascertain the identity of these three males. After wiretap surveillance and controlled buys of heroin from these three males, three search warrants were granted and executed. Three motor vehicles and two apartments (Chelsea and Waltham) were searched. Recovered were three kilos of heroin, \$25,000, five ounces of cocaine. Additionally, three motor vehicles were seized.
- ✚ **Operation Sober Up** was an investigation into illegal sober houses operating in Everett. This investigation resulted in the execution of two search warrants at two different Sober Houses (Prescott St and 304 Broadway). As a result of those search warrants, numerous individuals were arrested on outstanding warrants and drug charges. Recovered were heroin and prescription pills. Both sober houses were closed.
- ✚ During 2011-2012, Drug units from Everett, Chelsea, Malden, and Revere were all sworn in as Special Police Officers. This swearing in allows an Officer to make an arrest in a participating jurisdiction. The Everett Police Drug Unit was quick to make a drug arrest in another jurisdiction under this new partnership. This arrest occurred in Revere and was for the trafficking of Cocaine. Seized during this arrest was over 100 grams of cocaine located in a motor vehicle drug hide. The find is credited to Everett's K9, Xando.



304 Broadway





## 2012 Everett Police Department Highlights (cont.)

### Youth Services/Gang Unit (YSU)

In 2012, the YSU continued to work in conjunction with the Everett School Department, Boys and Girls Club, Cambridge Health Alliance, and other organizations to address youth issues in violence, gang involvement, substance abuse, and many other issues. Utilizing multi-jurisdictional teamwork and cooperation, the unit identifies gang or violence involved youth, and proactively addresses, mediates, and circumvents issues before they become violent. In today's society, the Officers are continuing to see pressure on young people to join gangs. Therefore, much of this Unit's energy goes into disrupting this effort.

- ✚ **Underage Alcohol Enforcement** - Throughout the summer of 2012, YSU continued to work with the City of Everett Licensing Commission in the detection, enforcement, and public education of underage drinking laws under a grant from the Cambridge Health Alliance. Targeted patrols and sting operations were successful in deterring many underage youth from acquiring and consuming alcohol. Four operations were conducted with 2 adult arrests for providing alcohol to minors. The Everett Police Department continues its Zero Tolerance Policy regarding juvenile alcohol abuse.
- ✚ **Shannon Grant** – In 2012, the Everett Police Department was awarded a \$23,500 Shannon Anti-gang Grant. These funds enabled the YSU to work on its goals of addressing youth issues in violence and gang involvement.
- ✚ **2012 Junior Police Academy** – Another great year for the Junior Police Academy with 40 Boys and girls in the 6<sup>th</sup>, 7<sup>th</sup>, and 8<sup>th</sup> grades were selected to participate. The focus was on team-building and teamwork. Aside from classes and demonstrations in daily police operations, SWAT, Criminal Investigations, Traffic Enforcement, and Marine Unit Operations, the squads were motivated by daily physical fitness, running, and team building exercises. The highlight of this year's academy was a trip to the Metro Rock Climbing Center in Everett.



## 2012 Everett Police Department Highlights (cont.)

### Youth Services/Gang Unit (YSU) (cont.)

- ✦ **Community Safety Audit and Photovoice Project- September, 2012** - The Everett Community Safety Audit and Photovoice Project is the result of 13 Everett youth working for 3 months with the Everett Police Department (EPD), the Everett Community Health Partnership Substance Abuse Coalition (ECHP-SAC), and Energize Everett (EE) on an intensive Community Safety Audit using the Photovoice technique. The intention of this Audit and Photovoice project was to provide a process to empower the youth of Everett and the community of Everett to share their perceptions of safety with people that make decisions over their daily lives. The Goals of Photovoice are to: Give “voice” to wide range of stakeholders; Create visual “data” to inform community discussions; Reach policy makers, and other key stakeholders

Three of the resulting themes are highlighted here: 1. There is a general consensus that the “city cares” and is taking steps to make the residents lives fuller; 2. There are many “broken” items / areas that are in need of repair. 3. To feel safe in the community, there needs to be a sense of “Physical Safety” starting with the general maintenance and upkeep of sidewalks and public places. “The Community Safety Team conducted 17 Person to Person Surveys. 13 of 17 (76%) of the interviewees stated they thought Everett was overall a safe community. 8 of 17 (47%) were concerned with walking alone at night. 8 of 17 thought that street lighting was an issue that needs to be addressed. 7 of 17 (41%) thought that there was a strong or growing sense of community in the city” (Community Safety Audit Rept: pg. 7).

The results (including photos) of this project can be found in a report listed here:

<http://everettpolicema.com/news%20items/Everett%20Comm%20Safety%20Audit%20Report.pdf>

- ✦ **Everett Youth Net-** In 2012, the YSU and local advocate groups worked with Everett youths to conduct trainings to provide strategies and tips for: employment, abusive relationships, physical and mental wellbeing.
- ✦ **Medical Marijuana Debate-** The YSU along with the Chief of Police facilitated a debate among youth about the legalization of medical marijuana. The event was held at the Boys and Girls Club and was sponsored by Teens in Everett Against Substance Abuse (TEASA).

## 2012 Everett Police Department Highlights (cont.)

### Crime Analysis

- ✦ **Capacity-** In 2012, the department was able to utilize interns to increase the department's crime analysis capacity. These interns logged over 1,200 hours in 2012. In late 2012, an intern was brought on part-time in addition to the full-time analyst. With the addition of a second analyst, the bones of a future Crime Analysis Unit are being laid.
- ✦ **Investigations-** In 2012, the Analysts aided the CIU in several in-depth and long-term investigations which resulted in the recovery of stolen property and the narrowing of suspects.
- ✦ **Data Requests-** In 2012, over 65 data requests were responded to. These requests came from both internal departments and regional partners. Along with the data requests, the analysts participated in ECTV segment productions and generated a minimum of four presentations every month (monthly Regional and City meetings).
- ✦ **Crime Prevention-** In 2012, the analysts attended many of the crime prevention meetings and prepared the presentations for each monthly meeting.
- ✦ **"Most Wanted" Bulletins-** In 2012, the analysts began to develop and release a weekly "Most Wanted" bulletin to the public via social media. A richer version of the bulletin is also released to the department on a weekly basis. This bulletin highlights residents of Everett who have active warrants for felonies.
- ✦ **DDACTS-** Through the work of the analysts, the Everett Police Department became the first regional department to roll out a new operational model called DDACTS (see pages 12-13 of this report).
- ✦ **Workgroups and Regional Data Sharing-** In 2012, the analysts coordinated the region's first workgroup among District Attorney's, Probation and the Police Department. The focus of this workgroup is to share information and updates on the high impact players that are affecting Everett and our neighboring cities. The analysts prepare a factsheet for each "player" for the monthly meeting. Additionally, the crime analysts served on a subcommittee for the Smart Policing Initiative grant. This position requires collaboration between the analysts from all three participating departments.
- ✦ **GIS Capacity-** Finally, in 2012, the analysts improved the Cities GIS or mapping capacity and worked to make improvements to the department's records management system to ensure data accuracy, timeliness, and usability.

## Table 1: 2008-2012 NIBRS\* Reportable Offenses And Corresponding Crime Rates

\*National Incident Base Reporting System (NIBRS)—to see a list of NIBRS Part A and Part B crimes visit: [http://everettpolice.com/crime\\_statistics1.htm](http://everettpolice.com/crime_statistics1.htm) Note: If offense type does not appear, then none were reported.

Offense Type <sup>2</sup>	Number of offenses					Crime Rate (per 1,000)				
	2008	2009	2010	2011	2012	2008	2009	2010	2011	2012
<b>Total</b>	<b>3,037</b>	<b>2,480</b>	<b>2,602</b>	<b>2,218</b>	<b>2,196</b>	80.58	64.75	62.5	53.23	52.7
Murder & non-negligent Manslaughter	2	1	3	0	3	0.05	0.03	0.07	0.00	0.07
Kidnapping/Abduction	6	1	3	5	0	0.16	0.03	0.07	0.12	0
Forcible Rape	17	7	16	17	11	0.45	0.18	0.38	0.45	0.26
Forcible Fondling	4	8	11	8	9	0.11	0.21	0.26	0.19	0.22
Statutory Rape	4	3	1	3	1	0.11	0.08	0.02	0.07	0.02
Aggravated Assault	122	116	143	113	88	3.24	3.03	3.43	2.71	2.11
Simple Assault	338	300	327	261	275	8.97	7.83	7.85	6.26	6.6
Intimidation	110	105	129	102	106	2.92	2.74	3.1	2.45	2.54
Arson	1	1	2	3	2	0.03	0.03	0.05	0.07	0.05
Burglary/Breaking & Entering	330	291	330	243	242	8.76	7.6	7.92	5.83	5.81
Counterfeiting/Forgery	11	11	18	8	7	0.29	0.29	0.43	0.19	0.17
Destruction/Damage/Vandalism Prop.	713	427	390	317	358	18.92	11.15	9.36	7.61	8.59
False Pretenses/Swindle	9	12	16	12	15	0.24	0.31	0.38	0.29	0.36
Credit Card/Automatic Teller Fraud	32	53	55	66	56	0.85	1.38	1.32	1.58	1.34
Impersonation	44	60	39	49	68	1.17	1.57	0.94	1.18	1.63
Welfare Fraud	5	5	3	5	1	0.13	0.13	0.07	0.12	0.02
Wire Fraud	2	4	4	2	5	0.05	0.1	0.1	0.05	0.12
Robbery	53	83	73	56	63	1.41	2.17	1.75	1.34	1.51
Pocket-picking	7	2	2	3	3	0.19	0.05	0.05	0.07	0.07
Purse-snatching	20	15	13	14	4	0.53	0.39	0.31	0.34	0.1
Shoplifting	106	92	86	95	88	2.81	2.4	2.06	2.28	2.11
Theft From Building	52	51	73	53	73	1.38	1.33	1.75	1.27	1.75
Theft From Motor Vehicle	393	282	319	283	212	10.43	7.36	7.66	6.79	5.09
Theft of Motor Vehicle Parts/Acc.	13	13	15	15	13	0.34	0.34	0.36	0.36	0.31
All Other Larceny	319	257	292	233	227	8.46	6.71	7.01	5.59	5.45
Motor Vehicle Theft	157	146	113	134	131	4.17	3.81	2.71	3.22	3.14
Stolen Property Offenses	32	16	21	18	15	0.85	0.42	0.5	0.43	0.36
Drug/Narcotic Violations	87	71	68	54	67	2.31	1.85	1.63	1.3	1.61
Drug Equipment Violations	20	26	19	22	22	0.53	0.68	0.46	0.53	0.53
Prostitution	13	6	5	3	6	0.34	0.16	0.12	0.07	0.14
Weapon Law Violations	9	12	9	10	8	0.24	0.31	0.22	0.24	0.19
Gambling Equipment Violations	0	0	0	2	6	0	0	0	0.05	0.14
Promoting Gambling	0	0	0	0	4	0	0	0	0	0.1

<sup>2</sup> Commonwealth Fusion Center Data Systems. Retrieved February 21, 2013, from the Mass CrimeSOLV database. Crime rates are based off of current Census



## Table 2: Offenses by Year Including Averages and Percent Change

Offense Type <sup>3</sup>	2008	2009	2010	2011	2012	5 Yr. Avg	5 Yr. % Change	1 Yr. % Change
<b>Total</b>	<b>3,037</b>	<b>2,480</b>	<b>2,602</b>	<b>2,218</b>	<b>2,196</b>	<b>2,507</b>	<b>-28%</b>	<b>-1%</b>
Murder & nonnegligent Manslaughter	2	1	3	0	3	2.25	50%	NC
Kidnapping/Abduction	6	1	3	5	0	3	-100%	-100%
Forcible Rape	17	7	16	17	11	13.6	-35%	-35%
Forcible Fondling	4	8	11	8	9	8	125%	13%
Statutory Rape	4	3	1	3	1	2.4	-75%	-67%
Aggravated Assault	122	116	143	<b>113</b>	<b>88</b>	116.4	<b>-28%</b>	<b>-22%</b>
Simple Assault	338	300	327	261	275	300.2	-19%	5%
Intimidation	110	105	129	102	106	110.4	-4%	4%
Arson	1	1	2	3	2	1.8	100%	-33%
Burglary/Breaking & Entering	330	291	330	243	242	287.2	<b>-27%</b>	0%
Counterfeiting/Forgery	11	11	18	8	7	11	-36%	-13%
Destruction/Damage/Vand Prop.	713	427	390	<b>317</b>	<b>358</b>	441	-50%	13%
False Pretenses/Swindle	9	12	16	12	15	12.8	67%	<b>25%</b>
Credit Card/Auto Teller Fraud	32	53	55	<b>66</b>	<b>56</b>	52.4	75%	<b>-15%</b>
Impersonation	44	60	39	<b>49</b>	<b>68</b>	52	55%	39%
Welfare Fraud	5	5	3	5	1	3.8	-80%	-80%
Wire Fraud	2	4	4	2	5	3.4	150%	150%
Robbery	53	83	73	<b>56</b>	<b>63</b>	65.6	19%	<b>13%</b>
Pocket-picking	7	2	2	3	3	3.4	-57%	0%
Purse-snatching	20	15	13	<b>14</b>	<b>4</b>	13.2	-80%	<b>-71%</b>
Shoplifting	106	92	86	<b>95</b>	<b>88</b>	93.4	-17%	-7%
Theft From Building	52	51	73	<b>53</b>	<b>73</b>	60.4	40%	<b>38%</b>
Theft From Motor Vehicle	393	282	319	<b>283</b>	<b>212</b>	297.8	-46%	<b>-25%</b>
Theft of Motor Vehicle Parts/Acc.	13	13	15	15	13	13.8	0%	-13%
All Other Larceny	319	257	292	233	227	265.6	-29%	-3%
Motor Vehicle Theft	157	146	113	134	131	136.2	-17%	-2%
Stolen Property Offenses	32	16	21	18	15	20.4	-53%	<b>-17%</b>
Drug/Narcotic Violations	87	71	68	54	67	69.4	-23%	24%
Drug Equipment Violations	20	26	19	22	22	21.8	10%	0%
Prostitution	13	6	5	3	6	6.6	-54%	100%
Weapon Law Violations	9	12	9	10	8	9.6	-11%	-20%
Gambling Equipment Violations	0	0	0	2	6	1.6	NC	200%
Promoting Gambling	0	0	0	0	4	0.8	NC	NC

<sup>3</sup> Commonwealth Fusion Center Data Systems. Retrieved February 21, 2013, from the Mass CrimeSOLV database. Crime rates are based off of current Census

## Table 2 Summary

The prior table includes those crimes that had a notable percent change in their reporting. Percent change looks at the number of crimes reported in 2012 by crime type and compares that number to the average number of crimes that were reported over the past four years. The resulting percentage change validates any trends that may be present in the 2012 data.

### Highlights:

1. In 2011, 2,218 offenses were reported, compared to the 2,196 offenses reported in 2012. This 1% decrease is not significant. However, the number of offenses in 2012 represents a 12 % decrease over the 5-year average, which is significant.
2. The crime types (*crimes in category larger than 10 per year*) that had the most significant **decrease** in the *past five years* are<sup>4</sup>: Purse-snatching (-80%), destruction of property (-50%), stolen property offenses (-53%), theft from a MV (-46%), larceny all other (-29%), aggravated assault (-28%) and burglary / breaking and entering (-27%).<sup>5</sup>
3. The crime types (*crimes in category larger than 10 per year*) that had the most significant **increase** in the *past five years* are: credit card / automatic teller fraud (+75%), impersonations (+55%), theft from a building (+ 40%) and robbery (+19%).

#### 4. Notable changes by number and type of crimes reported in 2012 compared to 2011 (*crimes in category larger than 10 per year*\*):

- a. A sample of notable **increases** in 2012 from 2011: Impersonation up to 68 incidents from 49 incidents or 39%, theft from a building up to 73 incidents from 53 incidents or 38%, drug narcotics violations up to 67 from 54 or 24% and robbery up to 63 from 56 or 13%. *Note on robberies*: three individuals were arrested in connection to 10+ robberies.
- b. A sample of notable **decreases** in 2012 from 2011: purse-snatching down from 14 to 4\* (*exception to less than 10 rule*) or -71%, aggravated assaults down from 113 to 88 or -22%, theft from a MV down from 283 to 212 or -25% and credit card/automatic teller fraud down to 56 from 66 or -15%.

---

<sup>4</sup> The five year calculations look at the changes in data from 2008 as compared to 2012 and not 2008-2012.

<sup>5</sup> Does not include crime categories where the total number of crimes in each year is less than 10. Please note that some of remaining categories do contain small/low numbers.

## Selected Trend Data for NIBRS Offenses 2008-2012

### Crime Growth by Percent 2008-2012

<b>Crime Category</b>	<b>2008</b>	<b>2009</b>	<b>2010</b>	<b>2011</b>	<b>2012</b>	<b>5 Yr. Avg</b>	<b>5 Yr. % Change</b>	<b>1 Yr. % Change%</b>
Crimes Against Person	531	480	555	468	496	506	-7%	6%
Crimes Against Property	2,047	1,727	1,763	1,564	1,585	1737	-23%	1%
Crimes Against Society	108	91	80	69	115	93	6%	40%
<i>Drug/Narcotic Violations</i>	87	71	68	54	67	69	-23%	19%
<i>Drug Equipment Violations</i>	20	26	19	22	22	22	10%	0%
<i>Prostitution</i>	13	6	5	3	6	7	-54%	50%
<i>Weapon Law Violations</i>	9	12	9	10	8	10	-11%	-25%
<b>Promoting Gambling*</b>	0	0	0	0	4	1	NA	100%
<b>Gambling Equipment*</b>	0	0	0	0	6	1	NA	100%

\*See Department highlights page 21 for cases that led to these charges

### Number of Crimes by Crime Type with a Firearm Involved

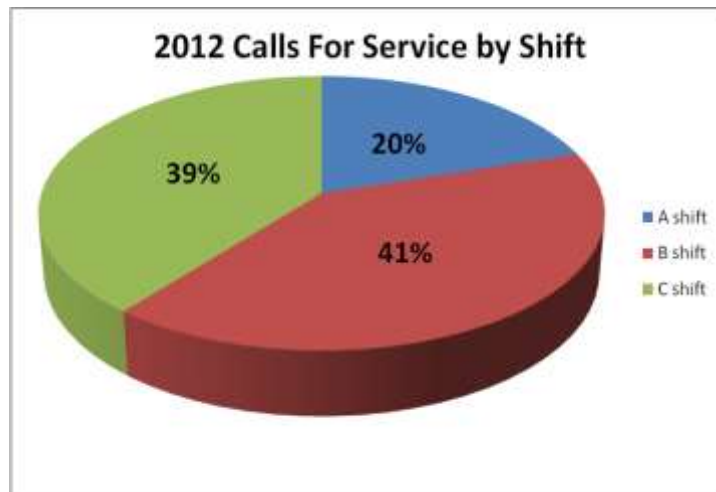
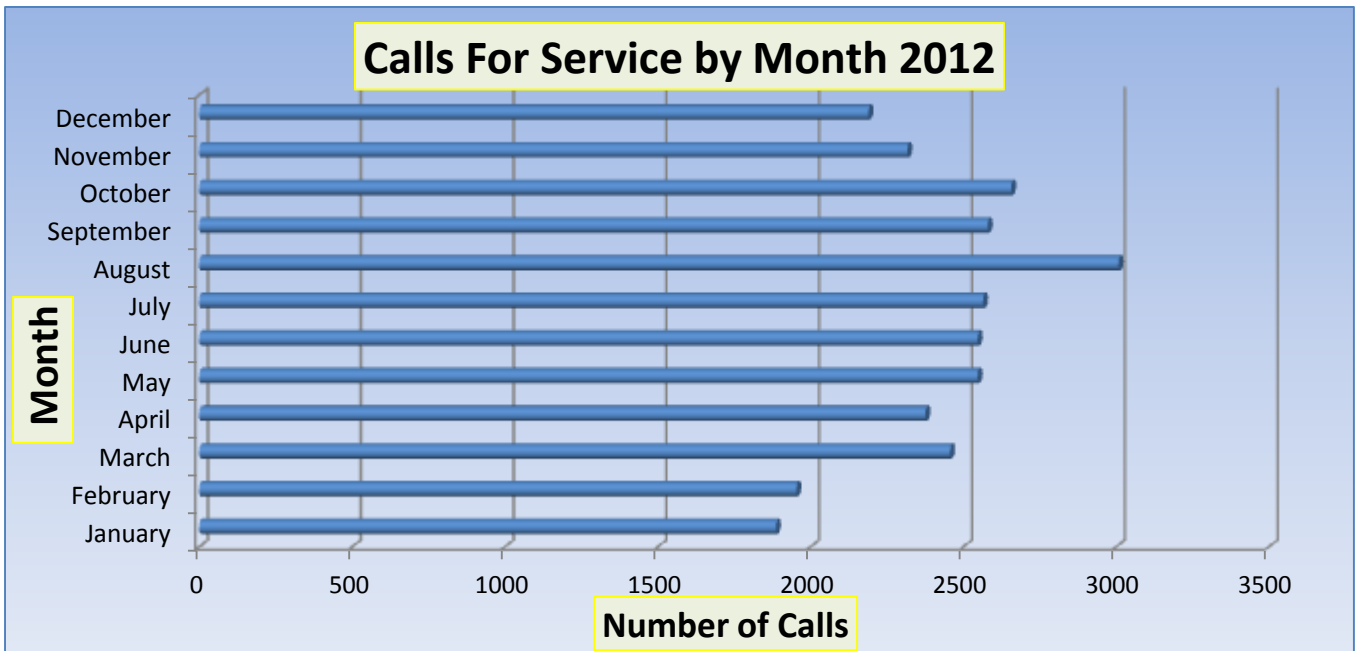
<b>Crime Type<sup>6</sup></b>	<b>2008</b>	<b>2009</b>	<b>2010</b>	<b>2011</b>	<b>2012</b>
<b>Total</b>	<b>22</b>	<b>31</b>	<b>49</b>	<b>29</b>	<b>19</b>
Murder and Non-negligent Manslaughter	0	0	1	0	0
Forcible Rape	2	1	1	0	0
Aggravated Assault	6	10	14	14	9
Robbery	14	20	33	15	10

<sup>6</sup> Commonwealth Fusion Center Data Systems. Retrieved February 20, 2013, from the Mass CrimeSOLV database. Crime rates are based off of current Census data.

# Calls for Service

In 2012, **29,085** calls for service were logged by the Everett Police Department.<sup>8</sup>

- 32,294 unique action codes were utilized (each call can have more than 1 incident type attached).
- January was the quietest month with 1887 calls taken.
- August was the busiest month with 3008 calls taken.
  - In 2011, **24,425** calls were logged with the busiest month being August with 2,273 calls taken and the quietest being November with 1,787 calls taken.

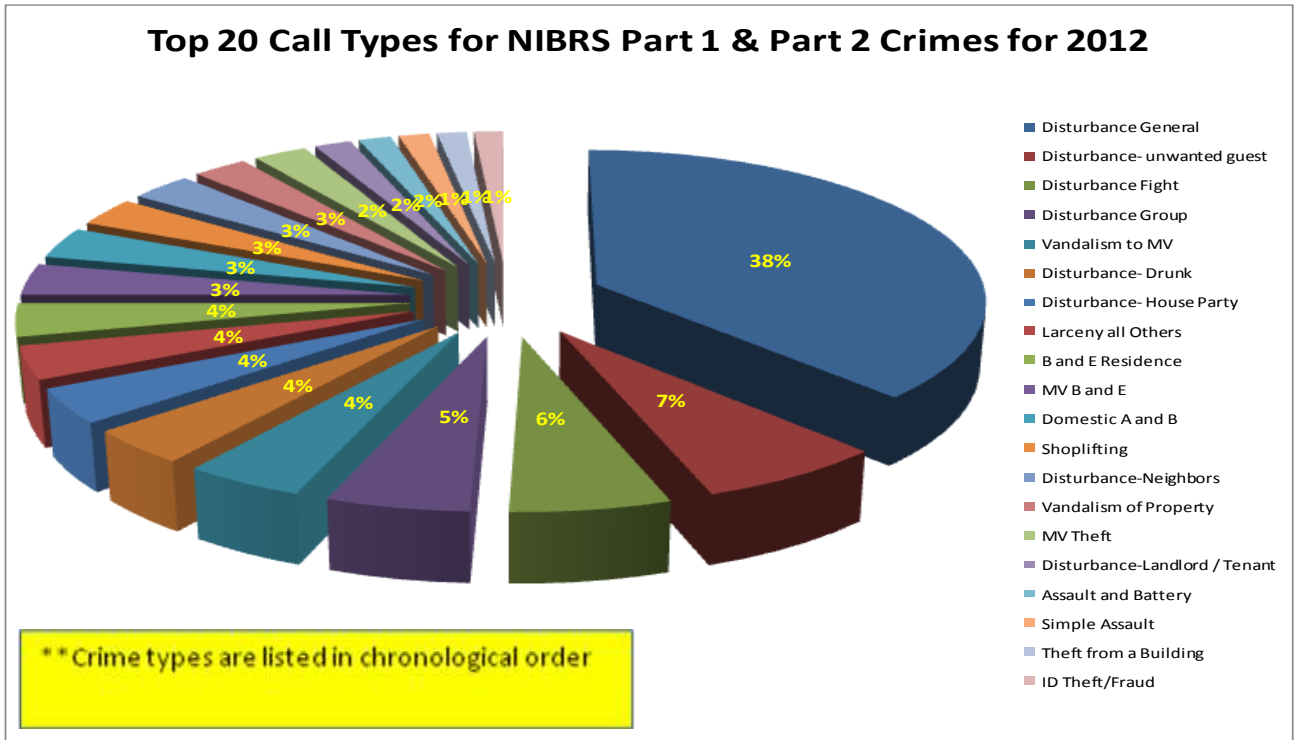
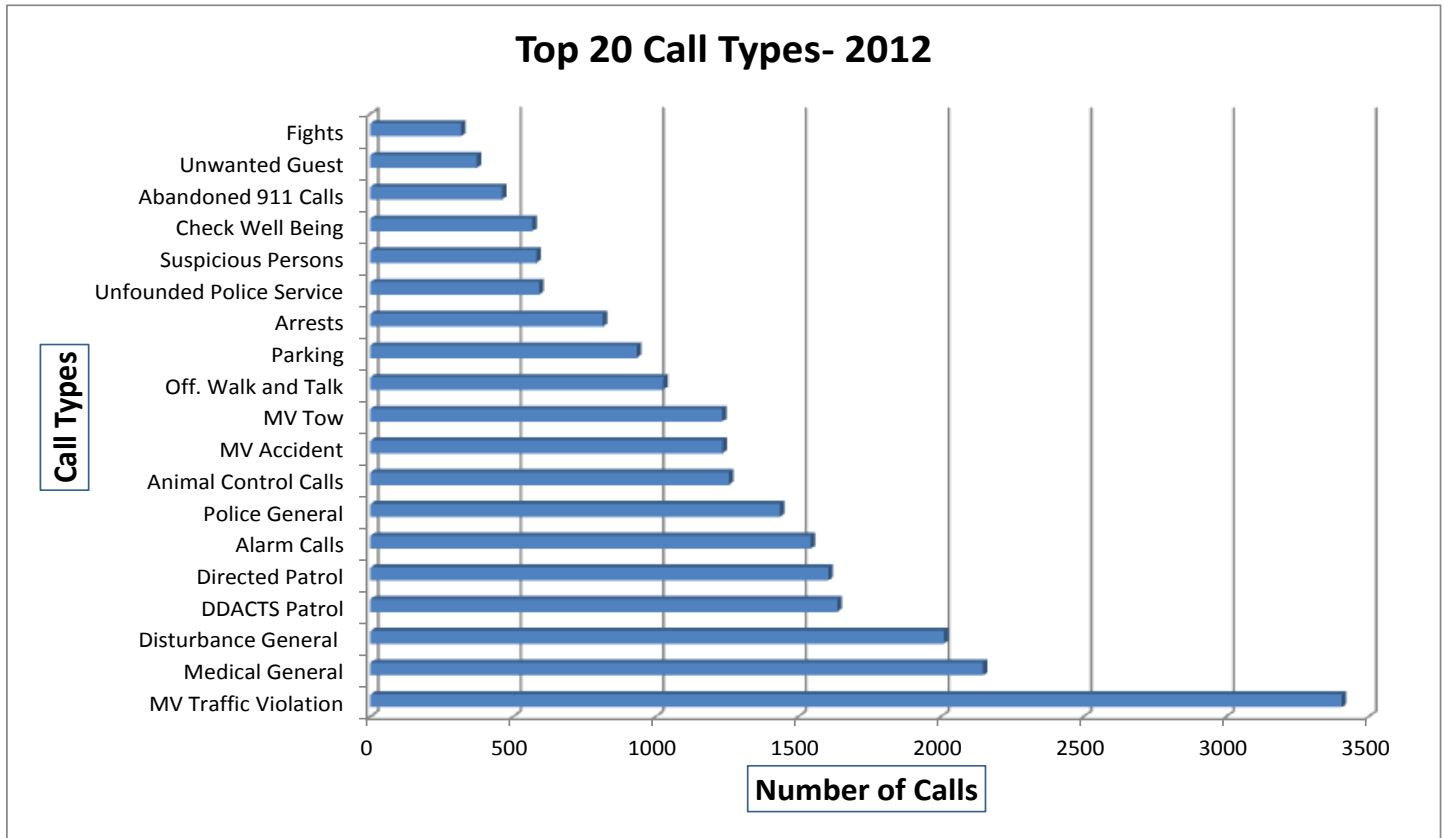


Note: A shift: 12:00am-8:00am; B shift: 8:00am-4:00pm; C shift: 4:00pm-12:00pm. As captured by CrimeTrack.

<sup>8</sup> Microsystems, CrimeTrack. Retrieved Feb 21, 2013 from the PROIV database.  
Everett Police Department Annual Report – 2012



# Top 20 Call Types—All Incidents Including Non-NIBRS Offenses



## 2012 and 2011 Hot spots

### Top 12 Locations by Number of Calls for Service<sup>9\*</sup>

2012		2011	
Location	# of Calls	Location	# of Calls
Whidden Hospital	362	Whidden Hospital	222
Walgreens – 317 Ferry	326	Walgreens – 317 Ferry	182
Broadway and Ferry (M/V accidents/ citations)	318	Target	134
Rite Aid- 405 Broadway	283	Everett High School	122
Swan St Park**	227	Rite Aid- 405 Broadway	119
Norwood and Broadway	223	Stop N Shop	116
Everett High School	217	Broadway and Ferry (M/V accidents/ citations)	96
Glendale Park**	171	Costco	81
Target	153	Home Depot	67
Glendale Mobil	122	Best Buy	58
Stop N Shop	115	484 Broadway	57
Costco	102	Exxon Mobil- 52 Beacham and Keverian School	55

#### \*Notes on top three locations:

- **Whidden Hospital's** most frequent calls include: Unfounded police service, abandoned 911, unruly patients and other disturbances, motor vehicle breaks, warrant service, missing property
- **Walgreen's** most frequent calls include: Officer walk and talks (accounts for the increase in calls for service from 2011), motor vehicle citations and tows, disturbances, medical, suspicious activity, larcenies, police information
- **Broadway and Ferry:** The increase in activity in this area is a direct result of the department's DDACTS initiative (see pages 11-12 for more information)

**\*\*Notes on New top 12 contenders:** *Glendale and Swan Street Parks* are on the list due to the increase in directed patrols and officer walk and talks along with traditional calls for service (loitering, noise calls, groups, fights).

<sup>9</sup> Microsystems, CrimeTrack. Retrieved Feb 22, 2013 from the PROIV database.  
Everett Police Department Annual Report – 2012

## Arrests/Summons/Warrants/Citations

In 2012, Everett Police made 816 arrests (790 adults, 26 juveniles).<sup>10</sup>

### Top 5 Arrestable Offenses

Offense Type	Number Arrested
Warrant Arrest	342
Domestic Assault and Battery	123
Unlicensed Operation of a MV	67
Disorderly Person	61
Disorderly Person	51

In 2012, 317 people were summonsed to court.

### Top 5 Crime Types Issued Summons

Summons Issued by Crime Type	Number
Unlicensed Operation of a M/V	108
Running a Red-light	30
License Suspended	22
Speeding	21
Identity Fraud and Attempt to Commit a Crime	13

In 2012, 181 warrants were issued by the Everett Police Department for 105 individuals.

### Top 5 Crime Types Issued Warrants

Warrants Issued by Crime Type	Number
Domestic A and B	26
A and B with a Dangerous Weapon	16
Viol. Of Protective Order	8
Malicious Destruction of Property over \$250	8
Intimidation of a Witness	7

In 2012, over 4,000 citations were issued by the Everett Police Department. Of these, about 1,580 were warnings. Another 1,048 were civil citations, 163 were arrest citations, and 252 were criminal citations.

### Top 5 Crime Types Issued Citations

Citations Issued by Crime Type	Number
U- turn Violation	1432
Speeding	545
Failure to Wear Seatbelt	341
Unregistered M/V	252
Unlicensed Operation	213

<sup>10</sup> Microsystems, CrimeTrack. Retrieved February 21, 2013 from the PROIV database.

## In Memory



In May of 2012, school crossing guard and longtime Everett resident, Marie Stewart passed way from injuries sustained when she was struck by a pickup truck while she was at work near the George Keverian Elementary School.  
Marie is missed by all those who knew her.





**Everett Police Department**  
**45 Elm Street Everett, MA 02149**  
**(617) 389-2120**

**<http://www.everettpolicema.com/>**

**This report was compiled by Crime Analyst Melissa Trzepacz.**  
**Report printed April, 2013.**

**Questions/Comments/Feedback: [Melissa.trzepacz@ci.everett.ma.us](mailto:Melissa.trzepacz@ci.everett.ma.us)**

This report is available for free download on the Everett Police Department website: <http://www.everettpolicema.com/>